

Actemium UPFE-Light

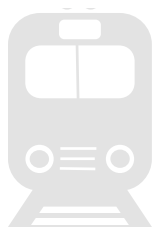
NDT Wheelset Diagnostic System

 Solutions & Services for Industry

Actemium UFPE-Light

Reliable Inspection in Railway Industry

In situations where both speed, accuracy and reliability are essential, the mobile UFPE-Light diagnostic system from Actemium is the right choice when it comes to ultrasonic inspecting of wheelsets.



Application

As part of maintenance, non-destructive tests are carried out at regular intervals on **wheelsets of rail vehicles** in the railroad sector.

The UFPE-Light inspection system enables the detection of **two-dimensional material separations below the running surface** of railroad wheels over the entire circumference of the railroad wheels.

Save Time and Costs

Thanks to its **compact mobility**, enabling rapid and flexible setup with just one metre of space needed, inspection times of just **15 minutes per wheel set** and **availability of 97%** (only 3% downtime for routine maintenance), **train downtime is kept to the absolute minimum.**

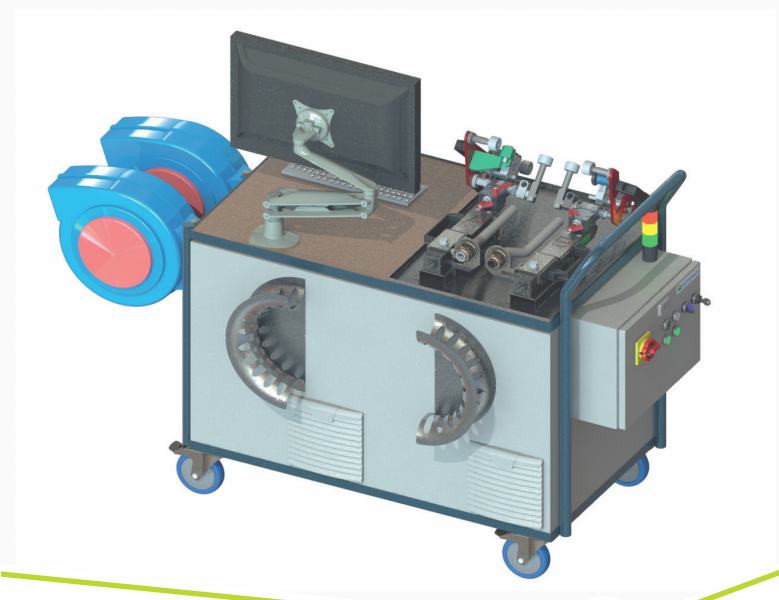
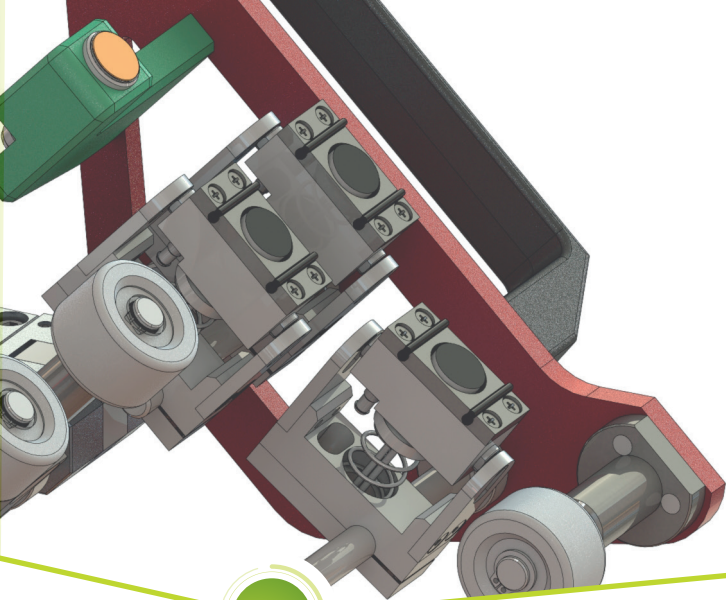
TOP FEATURES

- ✚ No removal of wheelsets necessary - test in installed condition
- ✚ Installation of 3 to 9 probes - customized adaption for other wheel designs possible
- ✚ Customized software (e.g. A-/B-/C-Scan etc.)
- ✚ Short inspection times enable minimum downtime

**We'll
inspect
for you**

Our **onsite inspection service** enables clients with limited inspection needs or **clients needing additional qualified personnel** support to cost-effectively fulfill their inspection requirements.

We have **all the necessary approvals and certifications** to do this, including personnel qualified in railway maintenance, and recognition as an NDT testing laboratory.



Reliability and service

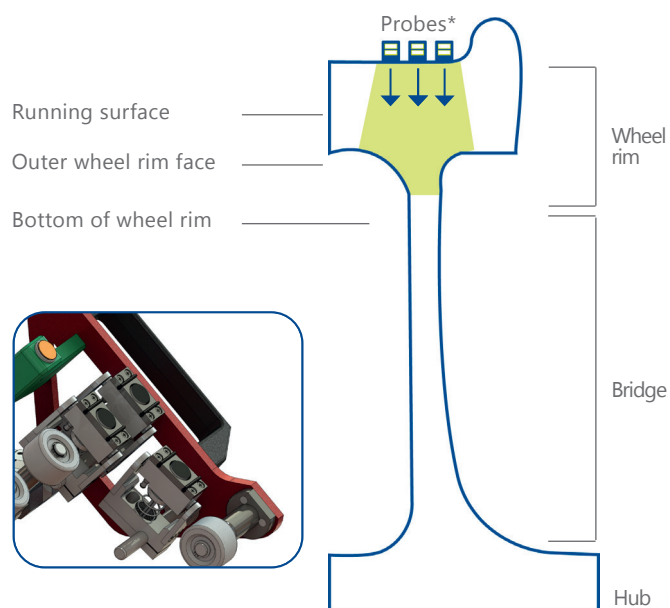
Our true strength is highest quality hardware and software and our ability to form a true partnership with our clients.

Technical details of UFPE-Light

- Highly mobile ultrasonic inspection system
- Operation modes: I/E or T/R
- Scan duration 1 minute per sample
- Manufacturer's certificate according to ISO 9001
- Direct and self-sufficient coupling agent supply (water)
- Uninterruptible power supply to safeguard test results
- Depth determination of the defect location in the A-scan, measured variables: KRS2mm
- Optional: lifting & rotating equipment

Highly accurate inspections

For optimal adaptation to the wheel tread and reliable results, our ultrasonic probes are mounted in gimbal-mounted holders.



*Adaptation for other wheel designs possible

TOP SERVICES

- ✚ Service Level Agreement guaranteed
24h reaction time with just two hours for mechatronic enquiries
- ✚ Train the trainer model
- ✚ Next day delivery of spare parts

- ✚ Remote maintenance service including calibration
- ✚ Qualified mechatronic and NDT technology engineers always on standby

More than wheels

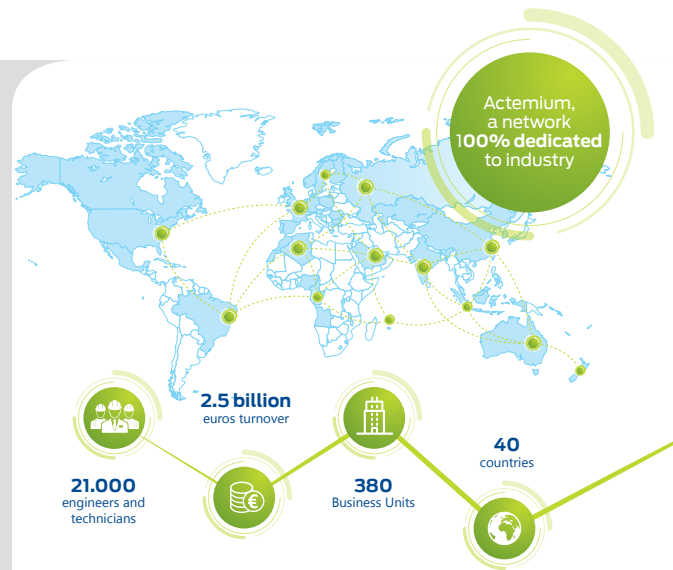
With over half a century's experience across the full spectrum of NDT technologies and industries, Actemium develops solutions to inspect a wide range of products and surfaces.

	Rotationally symmetric components - external inspection	Rotationally symmetric components - internal inspection	Flat components	Complex geometries (freeform surfaces / special geometries)
Hollow Axle Inspection System (e.g. SHUTTLE)		✓		
Rotor Inspection System (e.g. TURO-MAN)	✓			
Disk and Ring Inspection System (e.g. SIRO-MAN)	✓	✓		
Plate Inspection System (e.g. ARTUS)			✓	✓
Hollow Shaft Inspection (e.g. BORRIE)		✓		
Gantry-Solutions (e.g. UP-WIN)	✓		✓	✓
Immersion Tanks (e.g. GERRIE)	✓	✓	✓	✓
Inline Inspection Systems (Bars, Billets)	✓		✓	
Robots / Special Solutions	✓	✓	✓	✓

Type of material: metals (from A to Z), composite materials, clad and coated materials, base material and welds.

About Actemium

Present in 40 countries around the world, Actemium exists to improve our clients' industrial performance and competitiveness. Specifically, our NDT units provide both turnkey and a la carte solutions across all industrial sectors, including the transport, nuclear, aerospace, sheet metal fabrication, chemicals, petrochemical, food processing, pharmaceutical and healthcare industries, to support all stages of your NDT project.



We're at your service

For more information about SHUTTLE, including a technical data sheet, detailed specifications and applications or more about our tailored Special Engineering Solutions, write us at info.nds@actemium.de or call us on +49 (0) 911 9943-0.

www.actemium.com